

Twin Stacker - transporting and lifting two pallets at the same time

Use the space better and save money! The Twin Stacker can transport and stack two pallets at the same time and can operate in very confined areas, e.g. in lorries and shopping and storage areas. The Twin Stacker has small dimensions, very low own weight and is very manoeuvrable!

A unique patented system "locks" mast and propulsion unit when lifting more than 900 mm. The stacker is fully stable and safe, also when lifting. The Twin Stacker is very manoeuvrable also on uneven floors.

Twin Stacker has an elegant design with rounded corners and makes no damage to surroundings, pallets and goods. The design puts focus on the safety and ergonomic working conditions of the user. As an example the ergonomically correct handle ensures the user a relaxed hold.



Technical Specifications

Capacity

- In total 1800 kg
- On the lowest forks: Up to 1800 kg
- On the upper forks: Up to 800 kg

Perfect in confined areas

- Length behind the forks: only 655 mm
- Tight turning angle of 210°
- Can operate in narrow aisles

High performance with AC technology

- Very manoeuvrable on uneven floors
- Unique patented system ensures stability when lifting more than 900 mm
- Easy maintenance and setting of e.g. driving speed and acceleration
- Long operation time per charge
- Motor brake - optimum safety



New and unique patented system ensures stability and safety when lifting.



The low overall height gives optimum view conditions.



High free height makes it easy to cross edges and operate on uneven floors.



Low own weight means better utilisation of the capacity of the lorry tail-gate.

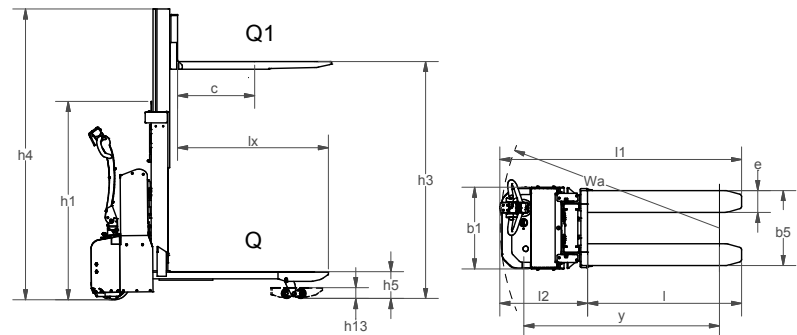


By utilising the space better in the lorries, the number of transport tours can be reduced.

Product (measured in mm)		TS 1801
Capacity (kg) upper forks	Q ₁	800
Capacity (kg) lowest forks	Q	1800 - Q ₁
Lifting height upper forks	h ₃	1770
Fork length	l	1150
Overall height (lowest forks lowered/raised)	h ₁	1355/1475
Overall width	b ₁	620
Fork span	b ₅	560
Fork width	e	163
Length without forks	l ₂	655
Overall length	l ₁	1805
Overall height	h ₄	2185
Lowered height, forks	h ₁₃	85/90 (lowest forks/upper forks)
Lifting height lowest forks	h ₅	200
Wheelbase	y	1460
Load centre	c	l/2
Turning angle of the wheels		210°
Gangway	A _{st}	2335*
Run-in length	l _x	1126
Turning radius	W _a	1635
Driving motor		24V 1,2 kW speed control electronically variable
Driving speed with/without load		Below 730/850** mm lift: 5/6 km/h, over 730/850** mm lift: 3/4 km/h
Pump motor upper forks		24V 1,2 kW
Lifting speed with/without load upper forks		70/120 mm/s
Lowering speed with/without load upper forks		120/70 mm/s
Pump motor lowest forks		24V 1,2 kW
Lifting speed with/without load lowest forks		35/50 mm/s
Lowering speed with/without load lowest forks		115/40 mm/s
Weight in kg without battery		465

* Tests show that 1850 mm are enough.

** lowest forks lowered/raised



We also offer tailor-made solutions.

Please ask for further information or visit our website www.logitrans.com