



[www.doosanflt.com](http://www.doosanflt.com)

## 7-Series Forklifts

### Diesel and LPG 2.0 to 3.5 Tonne Series

D20/25/30/33S-7, D35C-7 Euro Stage IIIA/IIIB

G20/25/30/33P-7, G35C-7



*Building your tomorrow today*

# PRODUCT FEATURES OVERVIEW

## Operator Compartment

The newly designed operator compartment provides optimal comfort and productivity.

- Spacious Operator Compartment with lots of leg room.
- Ergonomically located pedals.
- Low cowl height for better visibility.

## Operator Sensing System (OSS)

This systems avoids any unintended forklift movements when the operator is not seated.

## Counterweight & Cooling

The newly designed counterweight shows Doosan's 7-Series design identity and allows better airflow to maximize the cooling capacity.

## Powerful Engine

Powerful and market proven engines:

- Doosan 2.4 litre D24 NAP Euro Stage IIIB Diesel Engine
- Yanmar 3.0 litre Euro Stage IIIA Diesel Engine
- MMC 2.4 litre LPG Engine

## Engine Hood

The rigid steel engine hood with a wide open angle provides excellent accessibility to service components.

## Hydrostatic Steer Axle

The Doosan 7-Series steer axle provides smooth steering control and durability.

## Easy to Remove Floor Plate & Mat

The easy to remove floor plate offers great accessibility to the powertrain and other components. The thick rubber floor mat reduces noise and vibration for better operator comfort.





### Overhead Guard / Cabin (optional)

The ergonomically designed overhead guard and cabin offer great visibility and safety.

### High Visibility Mast (only for D20/25S-7/G20/25P-7)

The newly designed mast provides not only maximized operator's visibility, but also perfect mast stability.

### Adjustable Steering Column

The steering column is infinitely adjustable.

### New Instrument Panel

The easily readable, integrated instrument panel provides a clear overview of the truck's status.

### Tilt Cylinder Cover

The Tilt Cylinders are covered neatly, to avoid any hindrance to the operator. Furthermore, the Tilt Cylinder Cover creates additional space at the floor of the operator compartment.

### Rigid Drive-axle with ODB

The solid one-piece cast iron housing and J-hook mounts for the mast enhances reliability for low maintenance cost.

Oil-cooled Disc Brakes (ODB) are totally enclosed and contained in a sealed unit for maximum protection against contamination. This reduces maintenance and repair time, as well as costs.

---

# OUTSTANDING PRODUCTIVITY & DURABILITY

The best way to grow your business.





### High Powered, Fuel Efficient Engines

The Doosan D24NAP (Euro Stage IIIB) diesel engine, the Yanmar 3.0L (Euro Stage IIIA), the 2.4L MMC LPG Engine and the 2.5L GCT LPG Engine are built to meet the latest emission regulations. They provide powerful performance and excellent fuel efficiency.

### Oil-cooled Disc Brakes

The oil-cooled disc brake system is totally enclosed, for maximum protection against contamination. This maintenance free brakes system ensures maximum uptime, less damage, and zero cost for you.

### Powershift Transmission

The market proven powershift transmission modulates precisely clutch oil pressure, for smooth forward and reverse directional changes, to prevent damage to the transmission and make the forklift more durable.

### Cyclone, Dual Element Air Cleaner

The cyclone type and heavy duty dual element air filter cleaning system protects the engine against contamination. This extends the engine's service life and keeps the engine in the best condition in all environments.

### Enhanced Cooling System

The combination of a large capacity radiator and optimised airflow in the counterweight design, enhances reliability and durability of the truck and increases uptime in heavy duty applications.

### ECO Mode (only available for Doosan D24NAP)

The operator can easily change the driving mode by a switch on the dashboard. The ECO mode will reduce the fuel consumption by an additional 5% compared to STD mode.

### Protection Mode (only available for Doosan D24NAP)

This mode is checking the transmission oil and engine coolant temperatures and limits the truck's performance if the temperature is too high. This protects transmission and engine from failure.

### Autotilt Leveling System (optional)

The Autotilt Leveling system easily returns the mast back to a perfect vertical position by tilt angle sensing. Thanks to this system, product damage is prevented when the forks are not parallel with the rack.

### Under Protection & Engine Protection (optional)

The Belly Plate and Engine Guard protect the powertrain, engine, fan blades and many components against dirt and debris. This option is especially valuable in environments with very small waste materials (e.g. powder, iron filings, wood shavings, etc.) on the floor.

### Mast Visibility

The neatly arranged hydraulic hoses and chains enhance front visibility while keeping the strength and rigidity.

# HIGH POWERED, FUEL EFFICIENT PERFORMANCE

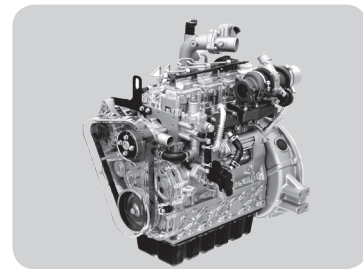


All our powerful diesel and LPG engines are compliant to the current regulations for reduced emissions. These in-line, 4-cylinder, water cooled, overhead valve engines provide high torque at low engine speeds for applications requiring ramp loading and unloading, fast lift speeds, or heavy hydraulic flow requirements.

### 2.4 Litre Doosan Diesel Engine

D20/25/30/33S-7 G2, D35C-7 G2  
The new Doosan D24A 2.4 litre diesel engine provides excellent performance for even the toughest applications. The Doosan engine is very powerful and works great on ramps and slopes. It provides high torque at low rpm or at low engine speed, reduces fuel consumption, and meets Euro Stage IIIB Regulation.

- D24A Euro Stage IIIB Electronic Controlled Engine
- 4 cylinders, 4 cycles, 2,392 cc
- High torque at low rpm. : 262 Nm @1,600 rpm



### 3.0 Litre Yanmar Diesel Engine

D20/25/30/33S-7 Y, D35C-7 Y  
This 3.0 litre diesel engine has been designed with advanced computer techniques to provide low noise levels and the combustion pre-chamber, BOSCH VE injection pump and injectors provide low emission characteristics. The 4TNE94L diesel engine complies with all Euro Stage IIIA emission requirements.



### 2.4 Litre MMC LPG Engine

G20/25/30/33P-7, G35C-7  
This engine provides great torque and high performance. The engine includes hydraulic lash adjusters which ensures a service free valvetrain for life of engine. A premium camshaft and balance shaft belts help not only to extend service intervals but also to reduce noise.



# SUPERB ERGONOMICS

Doosan 7-Series forklifts are designed with a focus on operator comfort.



## Tilt Cylinder Cover

The Tilt Cylinders are covered neatly, to avoid any hindrance to the operator. Furthermore, the Tilt Cylinder Cover creates additional space at the floor of the operator compartment.



## Easy Entry Grab Bar and Anti Slip Step Plate

Enables easy entry and exit. The wide anti slip step plates ensure the operator's safety in all weather conditions.



## Optimised Components Location

All components such as the seat, switches, instrument panel, levers and pedals are ergonomically designed and located to provide optimal comfort to the operator.

## Premium Seat

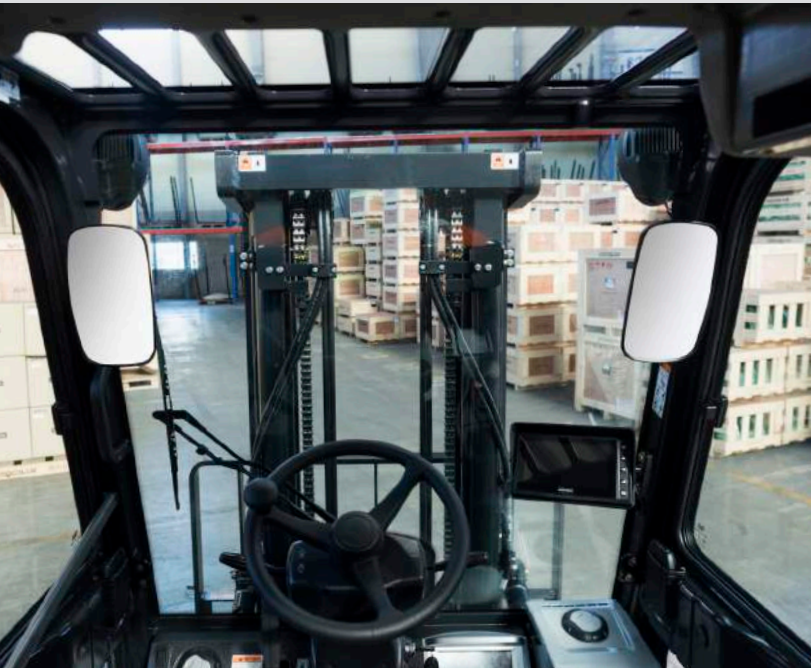
Designed with a low-profile mechanical suspension that significantly reduces vibrations. It helps the operator stay comfortable, no matter how rough the day gets.

## Rear Grab Bar with Horn

The horn button on the Rear Grab Bar enhances the comfort and safety while travelling in reverse, by enabling the operator to sound the horn while maintaining full control of the vehicle.







### Optimal Visibility

The low profile dashboard and the precisely designed overhead guard profile with pressed roof provide a clear view upwards whilst ensuring ultimate strength for safety.

### Fully Adjustable Operator Compartment

The steering column and seat position are fully adjustable to fit the individual preferences of each operator.



### Easily Readable Display

The easily readable, integrated instrument panel provides a clear overview of the truck's status.



### Full Cabin (optional)

The new Doosan cabin provides not only great comfort to operator, but also higher productivity with ergonomically designed features.



### Modular Cabins A/B/C (optional)

- A: steel roof with top glass window
- B: steel roof with top glass window and front windshield
- C: steel roof with top glass window, front and rear windshield

# SAFETY & STABILITY



## Rear Blue Spot Light

The Rear Blue Spot Light projects a blue light to the ground to alert other workers that a forklift is approaching. This system is especially useful when the surroundings are too noisy to hear any alarm signals.



## Panoramic Mirror

The panoramic mirror offers additional safety, to reduce accidents and damage to the truck, products or rack systems.



Orange colour

## Emergency Locking Seat Belt

This provides maximum safety for the operator, thanks to the function which does not lock during normal operation or working conditions, but only locks in case of an accident.



### Operator Sensing System

The Operator Sensing System (OSS) avoids any unintended forklift movements when the operator is not seated.

Tilt, lift and lowering functions are disabled if the operator is not in the seat and the ignition is on.

An alarm will sound if the operator leaves the seat without applying the parking brake.

A seat belt warning light on the dashboard reminds the operator to fasten his seat belt.



D24NAP: standard  
MMC: optional

### Ground Speed Control

The travel speed can be limited to 8, 10 or 15 km/h. Ground Speed Control reduces the risk on accidents due to unadjusted speed.



### Seat Belt Interlock

The forklift will not move without fastened seat belt. The tilt, lift and lowering functions are disabled if the seat belt is not fastened.



### 4th Lever Interlock

Prevents unintended use of the 4th lever, reducing the risk of load dropping accidents. This option is especially useful to optimize safety for applications with a bale clamp attachment.



# SERVICEABILITY

Doosan 7-Series has been designed with serviceability in mind: service components have been placed in easy-to-reach locations, in a way that the forklift can be serviced in minimum time. This reduces the service cost, which has a positive effect on the Total Cost of Ownership.

## Easy to Access

- Easy to open hood
- Wide hood open angle
- Locking type gas spring
- Easy removable floor mat and plate

## Easy to Service

- Optimised location to service :  
Battery, air cleaner, filters, dipstick gauges
- CANbus communications junction box :  
Integration of fuses and relays  
(only for D24NAP)



# VERSATILITY

Doosan 7-Series forklifts can be used in a variety of applications:



Building  
Materials



Fibre,  
Paper



Chemicals



Timber,  
Wood



Recycling



Industrial  
machinery and  
equipment



Wholesale trade,  
Retail





## World-class service network

You will receive the best after-sales service from your authorized local or national factory-trained dealer, backed by Doosan's own customer service center.

Doosan provides a 100% parts inventory to ensure that any downtime is minimized.

When you own a Doosan forklift, our high quality, responsive customer support team comes with it.

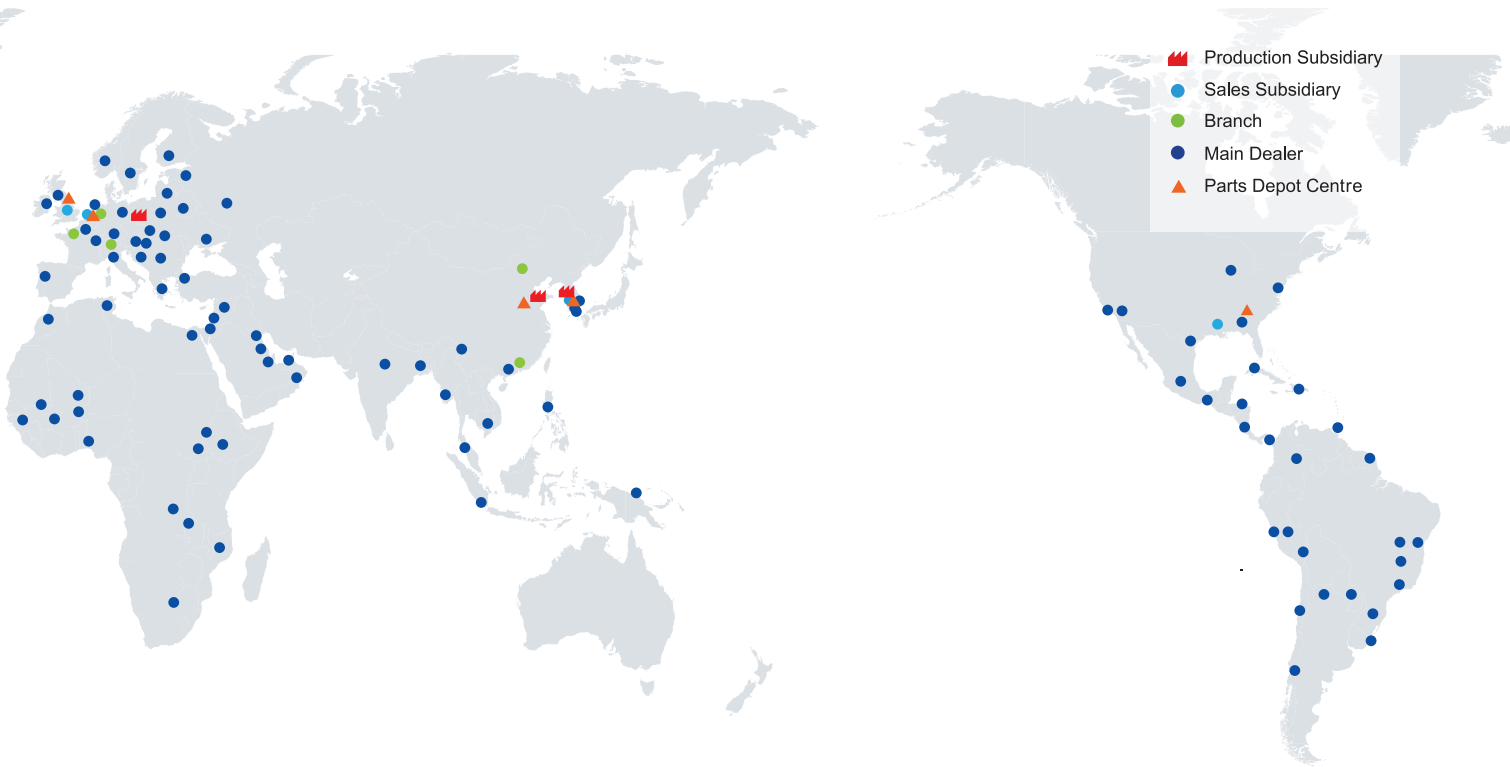
The Doosan network starts with your local dealer and ends with a national team of highly qualified and experienced personnel standing ready to support all your material handling needs.

Oil Cooled Disc Brake  
Operator Sensing System  
EQUIPPED  
TIER 4

## Standard Features and Options

	• Standard	o Option	n/a: not available
<b>SAFETY</b>	<b>Doosan D24 NAP</b>	<b>Yanmar 3.0 litre</b>	<b>MMC 2.4 litre LPG</b>
Direction Lever	•	•	•
Mast Interlock - Tilt, Lift and Lower	•	•	•
Operator Sensing System (OSS)	•	•	•
Emergency Locking Orange Seat Belt	•	•	•
Seat Belt Interlock	o	o	o
4th Lever Interlock	o	o	o
Spark Arrestor	o	o	n/a
Rear Blue Spot Light	o	o	o
Rear Grab Bar with Horn	•	•	•
Panoramic Mirror	o	o	o
Ground Speed Control	•	n/a	o
Back-up buzzer	•	•	•
<b>PRODUCTIVITY</b>	<b>Doosan D24 NAP</b>	<b>Yanmar 3.0 litre</b>	<b>MMC 2.4 litre LPG</b>
Electronic Controlled TCI (Turbo Charged Intercooler) Doosan Engines	•	n/a	n/a
Pedal Location (Accelerator, Brake and Inching)	•	•	•
LED Lights (Front)	•	•	•
LED Combination Lamps	o	o	o
Weight Scale	o	o	o
Autotilt Leveling	o	o	o
Quick Disconnect Hose Couplings	o	o	o
Special Overhead Guard - Drive in Rack / Low or High Overhead Guard	o	o	o
<b>COMFORT</b>	<b>Doosan D24 NAP</b>	<b>Yanmar 3.0 litre</b>	<b>MMC 2.4 litre LPG</b>
Adjustable Steering column	•	•	•
Integrated Instrument Panel	•	•	•
Full Cabin with Heater or Airconditioner	o	o	o
Modular Cabin, type A/B/C	o	o	o
Premium Suspension Seat, Heat Rays, Hip Restraint	o	o	o
<b>DURABILITY</b>	<b>Doosan D24 NAP</b>	<b>Yanmar 3.0 litre</b>	<b>MMC 2.4 litre LPG</b>
Electronic Control Units (ECU) Cover	•	n/a	n/a
Waterproof connectors	•	•	•
Dual Element Air Cleaner	•	•	•
Full Floating Driveaxle with Oil-Cooled Disc Brakes (ODB)	•	•	•
Autoshift Controller	o	o	o
Heavy Duty Cooling	o	o	o
Radiator Screen	o	o	o
Vented Side Panel	o	o	o
Pre-Cleaner	o	o	o
<b>SERVICEABILITY</b>	<b>Doosan D24 NAP</b>	<b>Yanmar 3.0 litre</b>	<b>MMC 2.4 litre LPG</b>
CANbus communications	•	n/a	n/a
Removable Floor Mat and Plate	•	•	•
Easy to Service	•	•	•
- Integrated Electric Components in the Junction Box (Relays and Fuses)			
- Tool-less Side Floor Mat and Plate			
- Wide Hood Open Range			
<b>ENVIRONMENT</b>	<b>Doosan D24 NAP</b>	<b>Yanmar 3.0 litre</b>	<b>MMC 2.4 litre LPG</b>
Emission Regulations	•	•	•
Ultra Low PM Combustion (ULPC) System with DOC	•	n/a	n/a
ISO 9001 / ISO 14001	•	•	•
2 Operation Modes (STD / ECO Mode)	•	n/a	n/a
<b>HOMOLOGATION</b>	<b>Doosan D24 NAP</b>	<b>Yanmar 3.0 litre</b>	<b>MMC 2.4 litre LPG</b>
CE	•	•	•

Remark: This list is based on factory data. Standard or optional options can vary for specific countries.



**Doosan Industrial Vehicle Ltd**  
 12 Kilvey Road, Brackmills Ind. Estate  
 Northampton, NN4 7BQ  
 United Kingdom  
 Tel.: +44 1604 825 600  
 Fax: +44 1604 825 650  
 Website: [www.doosanflt.com](http://www.doosanflt.com)

(FEBRUARY 2018)

**AUTHORISED DEALER**